



Queen's Green Canopy (QGC) Campaign In West Sussex

West Sussex Lieutenancy

Report by Lady Emma Barnard,
HM Lord-Lieutenant of West Sussex

October 2021 - March 2023











Headlines

Dame Susan Pyper with pupils at Rumboldswyke CE Primary School, Chichester



Cowdray Park Sessile Oak under which Queen Elizabeth 1 is said to have taken shelter

-  151,115 trees planted in West Sussex for QGC (over twice our target of 70,000 - 1,000 trees for each year of Queen Elizabeth II's reign)
-  More than 300 organisations, statutory and voluntary, and individuals take part in the campaign
-  One of the 70 cities in the UK, Chichester is the scene of one of the early tree planting ceremonies, at Rumboldswyke CE Primary School
-  748 acre Ebernoe Common Local Nature Reserve (LNR), near Petworth, recognised as one of 70 QGC Woodlands nationally

-  The 16th-century Hawthorn Tree on a Crawley housing estate recognised as one of 70 QGC Ancient Trees nationally
-  The Sessile Oak at Cowdray Park, Midhurst, under which Queen Elizabeth I is said to have sheltered, also recognised as one of 70 QGC Ancient Trees nationally
-  Community involvement and inclusion is central to the West Sussex campaign, a fact recognised by the presentation of QGC Tree of Trees awards to four organisations in the county
-  Despite increasing development, climate change and tree diseases, West Sussex remains one of the most wooded counties in England. Long may it remain so!

What is The Queen's Green Canopy?



QGC was launched nationally in the summer of 2021 by The late Queen and The then Prince of Wales as part of the celebrations for The Queen's Platinum Jubilee.

The aim was to encourage people from across the United Kingdom to *"Plant a Tree for the Jubilee"*.

It was agreed that the campaign would be managed locally by the Lord-Lieutenants, HM's representatives in each county. My predecessor, Dame Susan Pyper DCVO, oversaw the launch of the West Sussex campaign in October 2021 until her retirement in July 2022. My grateful thanks are due to her for passing on the QGC West Sussex campaign in such good shape.



After the death of The Queen in September 2022, the campaign was extended to 31st March 2023 to enable people to plant trees in her memory.

Organisations and individuals planting trees in the county were encouraged to record what they were doing on the national QGC website but, for various reasons (for example, the difficulty of registering plantings of more than 1,000 trees), this was not always possible.

This report therefore brings together both the plantings successfully recorded on the website and those which, for one reason or another, were not. The aim is to provide a comprehensive record of the progress of the QGC campaign in West Sussex.

The Response in **West Sussex**



Sir Richard Kleinwort, Vice Lord-Lieutenant at St Mark's CE Primary School, Staplefield

Planting at Southwick

West Sussex covers an area of 768 square miles and is predominantly rural in character, with some medium-sized towns (such as Crawley, Horsham and Worthing) and the city of Chichester.

Over half the land area of the county is included in either the South Downs National Park or in one of the two Areas of Outstanding Natural Beauty (AONBs): the High Weald and Chichester Harbour.

Trees, woodlands and hedgerows are one of the county's greatest assets, vital for sustaining wildlife habitats and creating a pleasant and sustainable environment.

West Sussex is the second most wooded county in the country (after Surrey) with about 19 per cent of the land area made up of woodland.

Over half of the wooded area is covered with traditional broadleaf trees, while the rest is made up of coniferous species and open scrub woodland. A quarter of the South Downs National Park - over 100,000 acres - is owned by just a dozen landowners, mostly in West Sussex.

Concern about the conservation of the landscape and nature is shared by many of the 882,700 people who live and work in the county. Perhaps not surprisingly, the response in West Sussex to the QGC campaign has been intense; this explains the large number of organisations and individuals who have been keen to be involved.



The progress of **The Campaign**



Launch of Queen's Green Canopy campaign at the South of England Agricultural Society's Autumn Show

Dame Susan invited one of her Deputy Lieutenants, Dr John Godfrey DL, to form a Task Group to lead the West Sussex campaign. The other members of the group were DLs with experience in land management, conservation, education and communications, and they were supported by the West Sussex Lieutenancy Officer.

The Group co-opted a locally based forestry expert and worked closely with the Chair of the West Sussex Association of Local Councils (WSALC) and the landscape adviser to the South Downs National Park Authority (SDNPA). The Task Group met six times, with the Chair maintaining contact with QGC nationally. A strategy was drawn up and roles assigned, with the Lieutenancy Officer reporting progress to the Lord-Lieutenant.

The West Sussex campaign was launched on a very wet day in October 2021 at the South of England Showground, Ardingly, by Caroline Nicholls DL and Sir Nicholas (now Lord) Soames, supported by representatives of the South East England Agricultural Society (SEAS), the Sussex Wildlife Trust (SWT) and the Woodland Trust (WT). Shortly afterwards, on a much sunnier autumn day, Dame Susan took part in a happy ceremony at Rumboldswyke CE Primary School, Chichester, in response to QCG's request for events to be held in each of the 70 cities in the UK.

This was the first of several such events involving schools around the county, from Staplefield to Southbourne and Selsey to Shoreham. Andrew Griffith, MP for Arundel and South Downs, supported planting events involving schools at Slindon and Washington and a community walnut tree event at Clapham.

Early contact was made with the South Downs National Park Authority (SDNPA), Chichester Harbour Conservancy (CHC), West Sussex County Council (WSCC) and the seven borough and district councils in the county (Adur & Worthing (A&W), Crawley (CBC), Horsham (HDC), Mid Sussex (MSDC), Arun (ADC) and Chichester (CDC)). All had plans and budgets for QGC that they were happy to share with the Task Group. The SDNPA was particularly keen to be involved, supporting the planting of 4,000 trees in West Sussex in the first planting season of the campaign. CHC dedicated four schemes, totalling 3,165 trees to QGC, and there is the prospect of more to come.

The progress of **The Campaign** (cont.)



Planting in the new Community Orchard at West Hoathly

The County, Borough and District Councils got involved, and trees were planted in parks and on recreation grounds, highway verges and school sites. Some made use of funds available from DEFRA and other sources. Through WSALC, contact was made with town and parish councils, and 52 of them (often with financial help from their district councils) undertook planting schemes. The largest was at Harting, where the Parish Council planted a total of 3,700 saplings at The Warren, South Harting.

Through the Country Land & Business Association and directly, contact was made with landowners and farmers in the county. The response of the major landowners (for example, Angmering Park, Balcombe, Barlavington, Borde Hill, Goodwood, Knepp, Leconfield, National Trust, Norfolk, Stansted, Warnham, West Dean and Wiston) was immediate and very positive, and in addition several farmers also pledged their support.

The Duke and Duchess of Richmond and Gordon dedicated to QGC the 18,300 trees they planted in 2022 as part of a new green corridor across the Estate. A further major contribution was made by the National Trust on their Slindon Estate, where 13,000 native trees were planted to complete the restoration to woodland of 185 acres of land cleared for agriculture in the two World Wars: this is the largest woodland restoration project in the Trust's history. The Norfolk & Angmering Park Estate planted a ring of five oaks in Arundel Park and 2,000 metres of hedge plants between Peppering Farm and Rackham Hill, to be known as "The Queen Elizabeth Hedge". Brinsbury College, the county land management college near Pulborough, was also quick off the mark, planting 270 mixed broadleaf trees to form a quiet spot for staff and students to recharge their batteries, and Lancing College planted 250 trees for the QGC campaign, with a 2,000-metre hedgerow to come.



Planting at Brinsbury College



Dr John Godfrey DL, Chair of the QGC Task Group with grandson Ollie and National Trust at Slindon

The progress of The Campaign

(cont.)



Lancing College

The Sussex branch of CPRE, The Countryside Charity, appointed Derek Crush of Daylands Farm, near Steyning, as its first “Hedgerow Champion” to raise awareness of the importance of wildlife habitats. The West Sussex Gazette reported that “having spent more than 30 years looking after some of the county’s most ancient hedgerows, his enthusiasm is infectious”. The significance of this initiative is reflected in the number of hedgerow projects now being undertaken in West Sussex, including the project at Lancing College and the planting of 3,000 whips at Park Farm, a traditional 360-acre mixed farm on the Norfolk estate near Arundel, to create a new 600-metre hedgerow which includes field maple, dog wood and crab apple.

Sussex is, of course, a coastal county, and the Task Group has been briefed on the Sussex Kelp Restoration Project by A&W and SWT officers and academics at the University of Sussex. This pioneering marine rewilding project aims to restore nearly 200 square kilometres of lost kelp (brown seaweed) along the Sussex Coast. A huge kelp forest has been lost from the Sussex coast since the 1980s, but new fisheries management pushing trawling 4km away from the West Sussex Coast should enable the seabed to recover and the marine life to thrive once again.

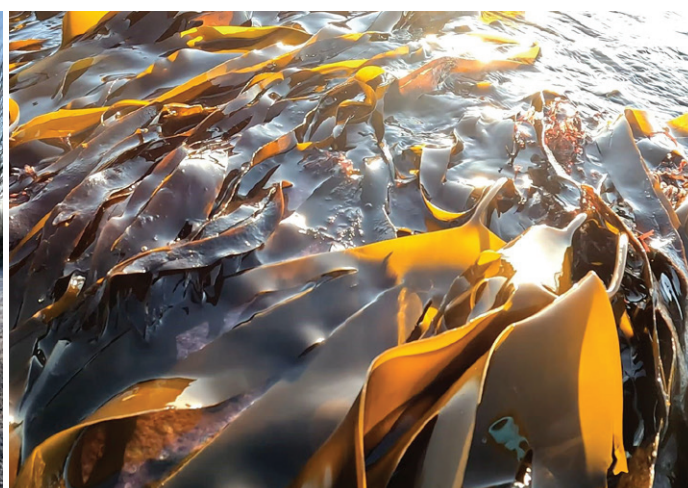
The seabed recovery is an interesting addition to the QGC West Sussex story, showing how the green canopy runs offshore as well as across land. Keep up to date with this exciting project by following Sussex Wildlife Trust’s kelp web pages.



Queen Elizabeth Hedge



Queen Elizabeth Hedge



Bognor Kelp, Photo by Paul Boniface

The importance of **Community Involvement**



The Lord-Lieutenant at Wild Heart Hill, Findon

The primary purpose of the QGC campaign is, of course, to mark the great contribution of Her Late Majesty Queen Elizabeth II to this country over so many years, but it is also about creating a legacy of understanding and support for the importance of trees in our lives and in our futures.

To achieve this objective, community involvement is crucial: without local, grassroots understanding of the contribution trees make to our lives and our future, our planet is - literally - doomed. It is therefore very pleasing to report that the response of communities across West Sussex to the QGC campaign has been very positive. The following examples can illustrate the work that has been taking place.

Four West Sussex groups were chosen to receive a special tree from the QGC Sculpture Tree of Trees which stood tall outside

Buckingham Palace as a message of hope, regeneration and optimism to the nation and the world as part of the Platinum Jubilee weekend celebrations in June 2022. Oak Grove College in Worthing, Petworth Community Garden, Steyning for Trees and Welderness CIC project at Wild Heart Hill in Findon joined more than 300 organisations from across the UK who were chosen by the QGC to receive these special trees in the name of The late Queen. I had the pleasure of presenting personally three of the four trees (each a 2m silver birch) to the West Sussex groups.

The importance of **Community Involvement** (cont.)

Oak Grove College

Students from this secondary school for special educational needs in Worthing had already joined as partner with Worthing Golf Club to plant trees on the downland course for the QGC. In Autumn 2022 they supported the Club to plant a new woodland, the Oak Grove Glade. Hugh Bonneville DL presented their Tree of Trees and helped them to plant it in an area of the school grounds used to teach pupils about horticulture and help them to build vital skills for the future: production, marketing, sales. The students were delighted to meet Hugh and questioned him about his roles in Downton Abbey and Paddington. The drama group put on an excellent presentation based on the Platinum Jubilee sketch, showing Paddington taking tea with The late Queen at Buckingham Palace.



Petworth Community Garden

Petworth Community Garden was inspired in 2005 by a Garden Organic project, 'Organic Food for All'. The idea was to offer an opportunity for local people with limited means to learn how to grow fresh, free organic fruit and vegetables, and to take home a share of the harvest. A strong group of local volunteers was formed and, with initial donations of pots, a pond, a greenhouse and seeds, the garden took shape. Over the years with the hard work and generosity of its members and the support of local organisations, it has developed and is currently fully wheelchair accessible on one side, with an accessible gate, paths and raised beds and an accessible compost toilet. The group has established Wellbeing in Nature Projects catering for a wide range of interests and abilities.



The importance of **Community Involvement** (cont.)

Steining for Trees

Steining for Trees (SFT) is a community group formed in late 2019 to promote the planting of trees in Steining to help fight climate change and for the beauty and well-being of the town. The aim is to plant as many trees as possible on both private and community land in Steining. The group works with the Steining Society, Steining Parish Council, HDC, WSCC, SDNPA, the Woodland Trust, CPRE and the Sussex Community Foundation. Their work includes funding and planting around 80 trees on road verges through a WSCC scheme; planting native hedges as wildlife corridors through Steining and working with volunteers to connect the Steining Downland Scheme to the Adur River Project, with 14 new hedgerows in place by the end of 2022.



The Welderness CIC and Wild Heart Hill

The Welderness CIC is a non-profit, community interest company bringing people together outdoors in natural environments, for workshops, courses and events specifically tailored to improve well-being, increase knowledge, skills and experiences. They also raise awareness and encourage action to tackle environmental issues. Their strapline is "Improving people's lives through nature, improving nature through people." Welderness is not lacking in ambition: "Our vision is to positively affect the lives of 10 million people worldwide through wilderness rehabilitation and connection to nature."



To Conclude



The March CE Primary School, Westhampnett



The Task Group



70th anniversary of Accession Day - planting in the Jubilee Gardens, Arundel

When we embarked on the QGC West Sussex project, we were very aware of the high regard in which The late Queen Elizabeth II was held here, and also of the concern of so many local people about the need to reverse the degradation of our environment before it is too late.

However, the scale and nature of the public reaction to the campaign both surprised and delighted us.

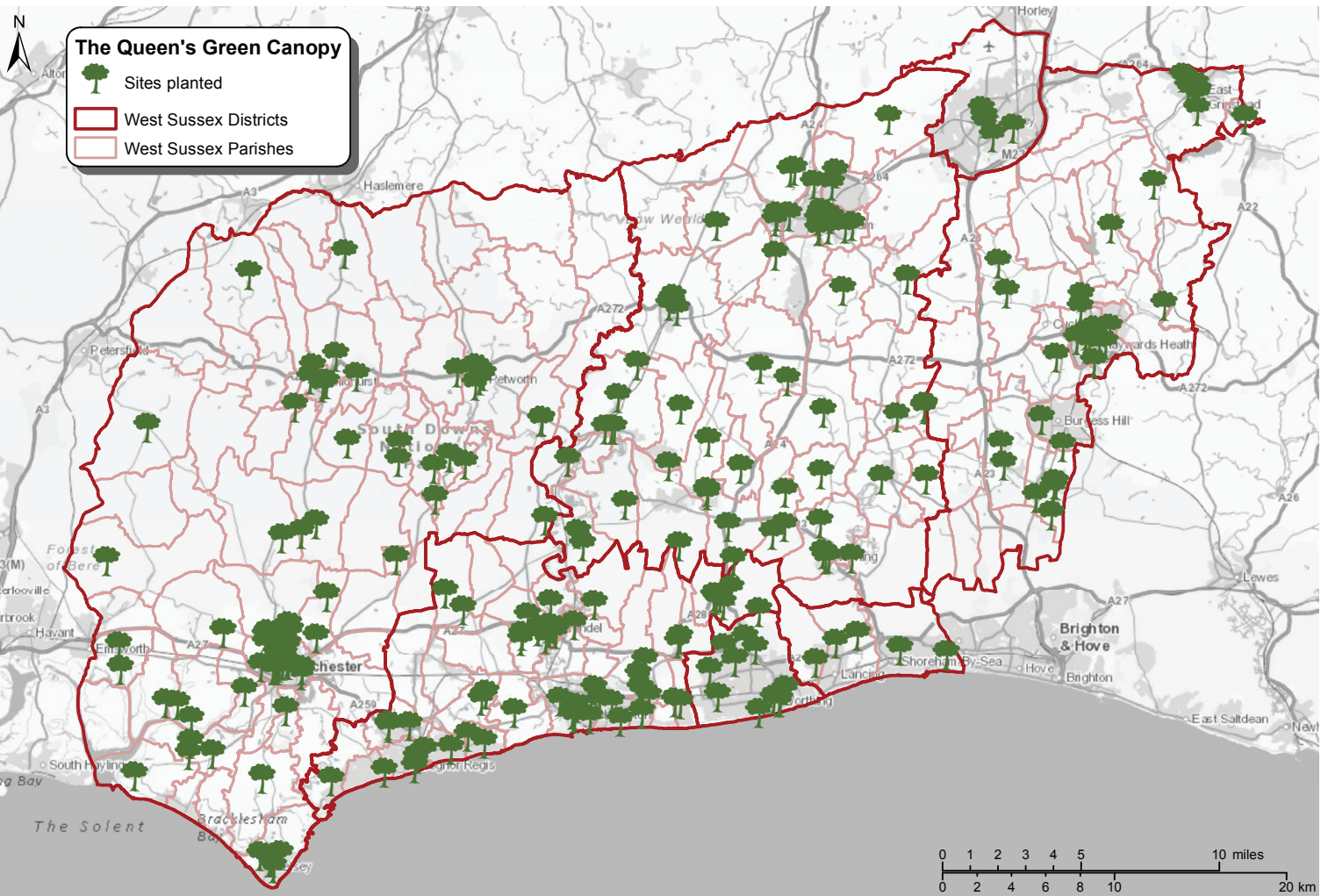
We feel that a new level of public consciousness and concern has been achieved, but this needs to be sustained. It is vital that the trees that have been planted and will be planted in the future are looked after and maintained, particularly in times of drought. Useful guidance on tree aftercare is available from the Woodland Trust: please do read it.

May I thank wholeheartedly the Task Group in particular, and all those who have contributed to the success of QGC West Sussex. Their hard work and dedication has been remarkable.

I wish everyone in West Sussex well in our efforts to sustain the good work that has been done to keep West Sussex beautiful and help it become an environmentally responsible county.

Lady Emma Barnard
HM Lord-Lieutenant of West Sussex

The Queen's Green Canopy



Credit: Dr Peter Smith , South Coast GIS

QGC West Sussex Roll of Honour



7th Crawley (Furnace Green) Cubs

Abbey Road, Worthing
Action in Rural Sussex (AiRS)
Adele, Worthing
Adur District Council
Aldingbourne Parish Council
Alex, Steyning
Alison, Crawley
Amberley Parish Council
Andrew Griffith MP
Andrea, Crawley
Angmering Grange Care Home
Angmering Parish Council
Angmering Park Estate
Angmering School
Anna, Chichester
Anne, East Grinstead
Anne, Littlehampton
Anthony, Hassocks
Arthur, Hassocks
Arun District Council
Arundel CE Primary School
Arundel Community Orchard
Arundel Gardens Association
Arundel Lawn Tennis Club
Arundel Town Council
Ashenwood Nature Reserve, Haywards Heath
Ashington Parish Council
Ashurst Parish Council
Ashurst Wood Village Council

Balcombe Estate
Barlavington Estate
Barnham Parish Council
Barratt/David Wilson Homes, Haywards Heath
Bartons Primary School
Beacon Hill Campsite, Horsham
Billingshurst Parish Council
Birdham Parish Council
Bishop of Chichester
Bishop's Palace Volunteers, Chichester
Bloomberg, Horsham
Bob Tanner, Tree Warden
Bognor Regis in Bloom
Bognor Regis Town Council
Bolney Parish Council
Borde Hill Estate
Botany Bay, Duncton
Bovis Estate, Chichester
Boxgrove Parish Council
Brad, East Grinstead
Brad & Scott, Crawley

Brinsbury College
Broadbourne Chicken Farm, Steyning
Broadbridge Heath Gala Association
Broadbridge Heath Parish Council
Brooklea Residents, Chichester
Buckingham Park School, Shoreham
Burgess Hill Town Council

Carol, Chichester
Caroline & David Nicholls, Worthing
Carylls Meadow Residents, Chichester
Chanctonbury Forest Garden, Steyning
Chantry Meadow Residents, Chichester
Charles Waring, Photographer
Chesswood Junior School, Worthing
Chichester City Council
Chichester College
Chichester District Council
Chichester Festival Theatre
Chichester Harbour Conservancy
Chichester Rotary Club
Chichester Society
Christ's Hospital School
Cissbury Fields, Worthing
Clapham Parish Council
Clare, Crawley
Clayton Holt, Hassocks
Clayton Wood Natural Burial Ground, Hassocks
Clerks Acre Residents Association, Crawley
Climping Parish Council
Cobnor Activities Centre Trust, Chichester
Cockhaise Farm, Haywards Heath
College Wood Farm, Steyning
Community Gardening (Fairoak Triangle), Worthing
Compton Farm Cottages
Coolham Montessori School
Country Land & Business Association
Covers Timber and Builders' Merchants
Cowdray Park Estate
CPRE Sussex
Crawley Borough Council
Cuckfield Parish Council
Cuckfield Park & Cricket Club

Daisy Lowe, Horsham
David Foster, IT Consultant
David, Petworth
Denne Neighbourhood Council, Horsham
Diane, Worthing
Dorset House School, Bury
Douglas Denham St Pinnock
Dr Peter Smith, Cartographer
Durrington Infants & Juniors School

QGC West Sussex Roll of Honour (cont.)



Earnley Parish Council
Easebourne CE Primary School
East Broyle Estate, Chichester
East Grinstead in Bloom
East Grinstead Natural History Society
East Grinstead Town Council
East Preston Parish Council
Eastbrook Primary Academy, Southwick
Ella Farm, West Wittering
Ellens Green Memorial Hall, Horsham
Elodie, Crawley
Eurotherm, Worthing

Felicia, Chichester
Ferring Country Centre
Ferring Parish Council
Findon Cricket Club
Findon Place
Findon Valley Parent & Toddler Group
Fishbourne CE Primary School
Fishbourne Roman Palace
Fittleworth CE Primary School
Fittleworth Community Shop & Cafe
Fittleworth Parish Council
Fittleworth Village Community
Florence Park, Chichester
Forest Neighbourhood Council, Horsham
Forest School, Horsham
Freddie, Pulborough
Friends of Clapham & Patching Churches
Friends of Manaton Close, Haywards Heath
Friends of Shipley CE Primary School
Friends of the Meads, Shoreham

Geoffrey, Henfield
Ginny, Petworth
Glebe Primary School, Shoreham
Goodwood Estate
Graffham Village
Graham Gresham Cooke
Great Ote Hall, Burgess Hill

Hammonds Farm, Birdham
Harting Parish Council
Haywards Heath ATC Squadron
Haywards Heath Town Council
Heaselands, Haywards Heath
Henfield Conservation Volunteers
Helen, Burgess Hill
Henfield Parish Council
Henri Brocklebank
Heron Way Primary School, Horsham
Heyshott Parish Council

Hill Family, Billingshurst
Hollycombe Primary School, Milland
Holmsted Farm, Cuckfield
Holy Trinity CE Primary School, Lower Beeding
Horsham District Council
Hurstpierpoint Brownies
Hurstpierpoint Guides
Hurstpierpoint Rainbows
Hurstpierpoint & Sayers Common PC

Itchenor Park Farm, Itchenor

James, Pulborough
Jacqui, Steyning
Jason, Pulborough
Jonathan, Horsham
Jonathan & Caroline Lucas
Josephine Lavelle, Forestry England
Jubilee Footpath Group, Midhurst
Judy, East Grinstead
Julie & Alec, Midhurst

Keniston Housing Association, Crawley
Kim, Arundel
King George Gardens Community, Chichester
Kingsham Primary Academy, Chichester
Knepp Estate

Lady Emma & James Barnard
Lancing College
Lancing Ring
Leconfield Estate
Lewes Home Friendship Group, Hassocks
Littlehampton Town Council
Littleton Farm, Upwaltham
Lisa, Hove
Louisa, Hassocks
Louise, Hassocks
Louise, Pulborough
Lowerhone Farm, Bosham
Lucy, Worthing

Manhood Wildlife & Heritage Group
Maplehurst Road, Chichester
Marianne, Horsham
Meads Primary School, East Grinstead
Medmerry Primary School, Selsey
Michelle, Billingshurst
Michelle, Littlehampton
Michael Tu, Arundel
Mick, Steyning
Middleton-on-Sea Parish Council
Midhurst Rother College

QGC West Sussex

Roll of Honour (cont.)



Midhurst Town Council
Mid Sussex District Council
Milland Parish Council
Miller Homes, Chichester
Mitchell's, Billingshurst
Montessori Nursery, Coolham

National Trust, Petworth
National Trust, Slindon
Neil & Ros Hart, Bepton
Nell Paton, Arundel
New Park Centre, Chichester
Nicky, Chichester
Nigel, Pulborough
Norfolk Estate
Noor Wood, Tortington
North Heath Women's Institute
North Horsham Parish Council
North Mundham Parish Council
North Walls Residents Association, Chichester
Nurses Cottage, Warningcamp
Nuthurst Parish Council

Oak Grove College, Worthing
Oakwood School, Chichester
Ollie Godfrey, Bury
Ote Hall, Burgess Hill

Pagham Parish Council
Parham House & Gardens
Park Farm, Arundel
Parkfield Conservation, Crawley
Paul Boniface
Penny, Haywards Heath
Paul, Littlehampton
Peter, Chichester
Petworth Community Garden
Petworth Town Council
Pulborough Parish Council

Raynor Family, Hassocks
Redrow Homes, Haywards Heath
Richard, Crawley
Rick, Horsham

Rotary Club of Shoreham & Southwick
Rumboldswyke CE Primary School, Chichester
Rusper Parish Council
Rustington Parish Council

Sarah, Chichester
Saskia Snel, Oak Creatives
Scott, East Grinstead
Seaford College, Petworth

Seal Bay Resort, Selsey
Seal Primary Academy, Selsey
Scott, East Grinstead
Sephi, Chichester
Scott, East Grinstead
Selsey Community Nursery
Shepherd Neame Ltd., Haywards Heath
Shermanbury Parish Council
Shipleigh Parish Council
Shoreham Beach Primary School
Simon & Lottie, Upperton, Petworth
Slindon Parish Council
Slinfold Parish Council
Small Dole Village Hall Committee, Henfield
Sonia Lorenzo-Martin
Southbourne Junior School
Southbourne Sea Scouts
South Coast GIS
South Downs National Park Authority
South Downs National Park Trust
South of England Agricultural Society
South Pond Group, Midhurst
Southwater Parish Council
Southwick & Fishersgate Horticultural Society
Squires Garden Centre, Washington
St Giles' Church, Graffham
St Lawrence CE Primary School
St Margaret's Church, Fernhurst
St Margaret's Church, Warnham
St Mark's CE Primary School, Staplefield
St Mark's Church, Holbrook
St Mary's CE Primary School, Washington
St Paul's Church, Chichester
St Peter's CE Primary School, Henfield
Stansted Park Foundation
Steyning Community Orchard
Steyning Downland Scheme
Steyning Downland Village Women's Institute
Steyning for Trees
Steyning Parish Council
Stopham Estate
Sturgeon Smiths, Littlehampton
Summersdale Copse, Chichester
Susan & Jonathan Pypier, West Chiltington
Sussex Grange
Sussex Kelp Restoration Project
Sussex Newspapers
Sussex Wildlife Trust
Suzanne, Bognor Regis
Suzanne Benwell, Bognor Regis

Tanbridge House School, Horsham
Tarquin, Henfield
Tarring Flood Action Group

QGC West Sussex

Roll of Honour (cont.)



Thakeham Parish Council
The Duke of Norfolk EM
The Leys, Singleton
The March CE Primary School, Westhampnett
The Meads Primary School, East Grinstead
The Old Rectory, Rackham
The Sanctuary, Worthing
The Thatched House Owners, Littlehampton
The Wellderness, Findon
Tillington Parish Council
Tortington Common Dormouse Project

University of Brighton
University of Sussex
Upper Beeding Parish Council

Victor & Sarah, Chichester

Warnham Local Nature Reserve
Warnham Parish Council
Warnham Park
Warningcamp Parish Meeting
Washington Parish Council
Weald & Downland Living Museum
Weald to Waves
Wellderness
West Chiltington Parish Council
West Dean Estate, West Stoke
West Grinstead Parish Council
West Hoathly Parish Council
West Sussex Association of Local Councils
West Sussex County Council
West Sussex Federation of Women's Institutes
Wild Heart Hill, Findon
William Robinson Gravetye Charity
Windlesham House School Little Nursery
Windmills Junior School, Keymer
Wiston Estate
Woodland Trust
Woodlands House Residence, Chichester
Woodmancote Parish Council
World of Books, Worthing
Worth Abbey
Worthing Borough Council
Worthing Golf Club
Worthing Homes Ltd
Worthing Society

Yapton Parish Council

Zoe, Haywards Heath



David Tupper DL and Grandson Henry
at Littleton Farm, Upwaltham